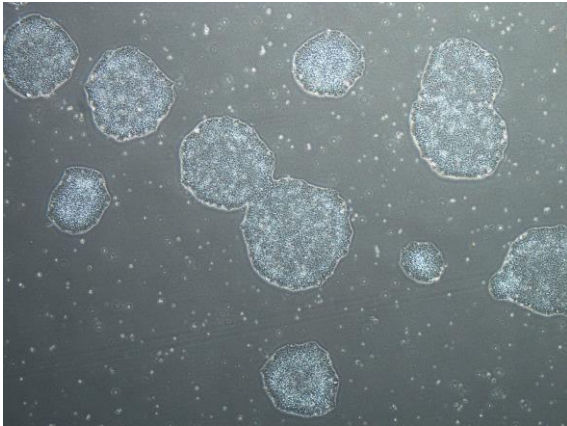
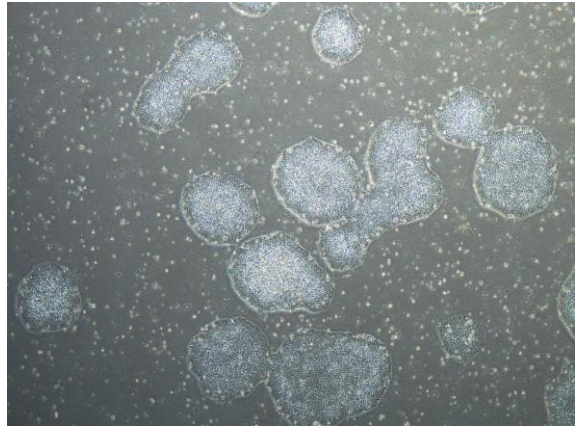


【 CiRA-j-1220 】 Morphology of iPSC colonies

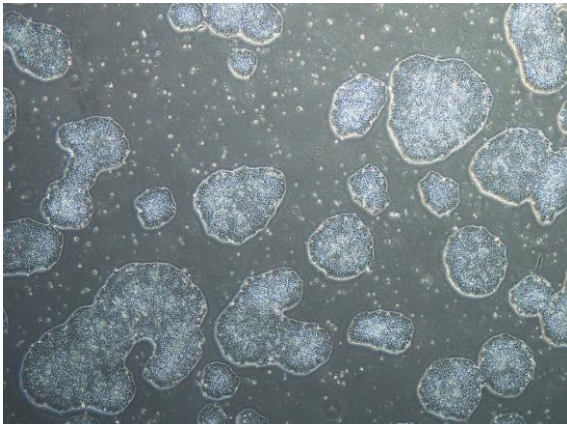
CiRA-j-1220-A: passage-3



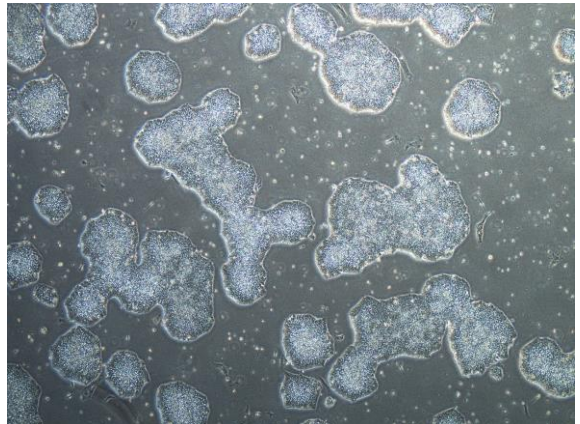
CiRA-j-1220-B: passage-3



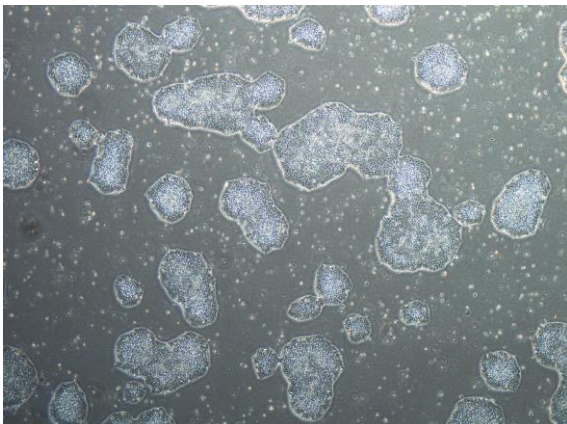
CiRA-j-1220-C: passage-3



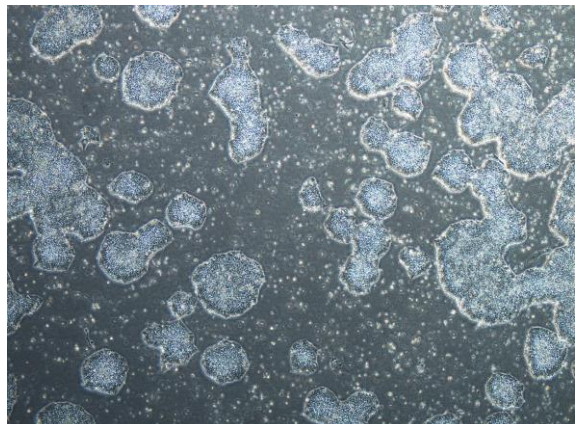
CiRA-j-1220-D: passage-3



CiRA-j-1220-E: passage-3



CiRA-j-1220-F: passage-3



(All images were captured at 4x magnification)